



# Product / Catalog

## Details Make Our Profession

We specialize in the design  
and development of high quality antibodies & proteins.

Website



LinkedIn



[www.leadgenebio.com](http://www.leadgenebio.com)

TEL : +886-6-2536677 (Headquarter)  
+886-2-27065528 (Taipei Office)  
E-MAIL : [info@leadgene.com.tw](mailto:info@leadgene.com.tw)



# /// About Leadgene

Leadgene Biomedical, Inc. develops and manufactures assay tools. It also offers contract research services to the diagnostic and pharmaceutical industries.

Established in 2013, our commitment is clear:

“To accelerate biomedical advancement through innovative and prosperous nature of research and development.”

The company was led by a group of young scientists. It provides premium quality reagents through creative and scientific approaches, with production standards outlined in quality management systems ISO 13485 and GMP/QMS. To date, Leadgene has built its recognized expertise in technology innovation and will continue to expand these efforts throughout our entire product portfolio.



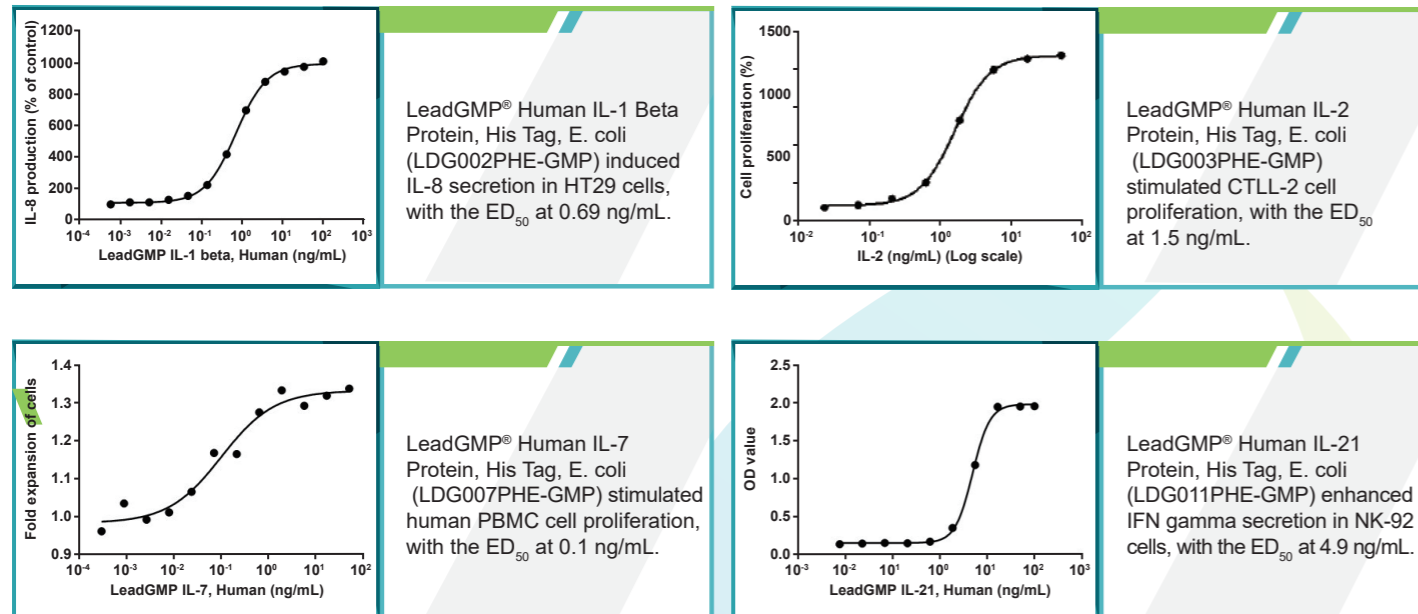
# /// Contents

GMP-Grade Products .....	1
Cytokines .....	2
Growth Factors .....	7
Chemokines .....	9
Enzymes .....	11
Neurotrophins .....	11
Lectins .....	12
CD Antigens .....	12
Other Proteins .....	13
Virus-Like Particles .....	14
Viral Antigens .....	14
Primary Antibodies .....	16
Secondary Antibodies .....	24
Amplification Technologies .....	27
Molecular Biology .....	28
Cell Biology Reagents .....	28
Protein Engineering .....	29
ELISA Kits .....	30
LEADSPHERE® Technology .....	30

# GMP Products

Cat. No.	Product name	Cat. No.	Product name
LDG013PHE-GMP	LeadGMP® Human IFN Gamma Protein, His Tag, E. coli	LDG025PHE-GMP	LeadGMP® Human IL-18 Protein, Tag Free, E. coli
LDG002PHE-GMP	LeadGMP® Human IL-1 Beta Protein, His Tag, E. coli	LDG011PHE-GMP	LeadGMP® Human IL-21 Protein, His Tag, E. coli
LDG003PHE-GMP	LeadGMP® Human IL-2 Protein, His Tag, E. coli	LDG014PHE-GMP	LeadGMP® Human TNF Alpha Protein, His Tag, E. coli
LDG007PHE-GMP	LeadGMP® Human IL-7 Protein, His Tag, E. coli	LDG002R-GMP	LeadGMP® Endoglycosidase H (Endo H)
LDG009PHE-GMP	LeadGMP® Human IL-15 Protein, His Tag, E. coli	LDG004R-GMP	LeadGMP® PNGase F

## Highlighted Products



# Cytokines

## Human

Cat. No.	Product name	Cat. No.	Product name
LDG120PHE	Human 4-1BBL, His Tag, E. coli	LDG117PHE	Human FASL, His-SUMO Tag, E. coli
LDG127PHE	Human AITRL, His Tag, E. coli	LDG092PHE	Human Flt-3 Ligand, His Tag, E. coli
LDG124PHE	Human APRIL, His Tag, E. coli	LDG061PHE	Human GIF, His Tag, E. coli
LDG128PHE	Human BAFF, His Tag, E. coli	LDG002PHM	Human HMGB1 (C23A, C45A), His-SUMO Tag, HEK293
LDG099PHE	Human BMP-2, His Tag, E. coli	LDG003PHM	Human HMGB1 (C23A, C45A, C106A), His-SUMO Tag, HEK293
LDG100PHE	Human BMP-3, His Tag, E. coli	LDG049PHE	Human HMGB1, His Tag, E. coli
LDG101PHE	Human BMP-4, His Tag, E. coli	LDG001PHM	Human HMGB1, His-SUMO Tag, HEK293
LDG102PHE	Human BMP-5, His Tag, E. coli	LDG050PHE	Human HMGB2, His Tag, E. coli
LDG103PHE	Human BMP-6, His Tag, E. coli	LDG004PHM	Human HMGB2, His-SUMO Tag, HEK293
LDG104PHE	Human BMP-7, His Tag, E. coli	LDG045PHE	Human IFN Alpha 1a, His Tag, E. coli
LDG105PHE	Human BMP-8a, His Tag, E. coli	LDG046PHE	Human IFN Beta 1a, His Tag, E. coli
LDG106PHE	Human BMP-8b, His Tag, E. coli	LDG047PHE	Human IFN Gamma, His Tag, E. coli
LDG107PHE	Human BMP-9, His Tag, E. coli	LDG098PHE	Human IFN Omega, His Tag, E. coli
LDG108PHE	Human BMP-10, His Tag, E. coli	LDG002PHE	Human IL-1 Alpha, His Tag, E. coli
LDG109PHE	Human BMP-11, His Tag, E. coli	LDG003PHE	Human IL-1 Beta, His Tag, E. coli
LDG110PHE	Human BMP-12, His Tag, E. coli	LDG094PHE	Human IL-1RA, His Tag, E. coli
LDG111PHE	Human BMP-13, His Tag, E. coli	LDG004PHE	Human IL-2, His Tag, E. coli
LDG112PHE	Human BMP-14, His Tag, E. coli	LDG005PHE	Human IL-3, His Tag, E. coli
LDG113PHE	Human BMP-15, His Tag, E. coli	LDG006PHE	Human IL-4, His Tag, E. coli
LDG114PHE	Human BMP-16, His Tag, E. coli	LDG007PHE	Human IL-5, His Tag, E. coli
LDG139PHE	Human CHI3L1, His Tag, E. coli	LDG008PHE	Human IL-6, His Tag, E. coli



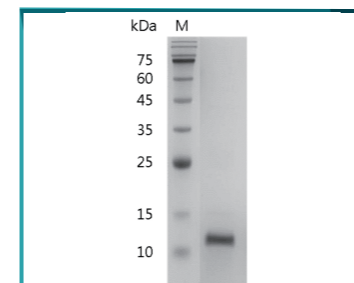
# Cytokines

## Human

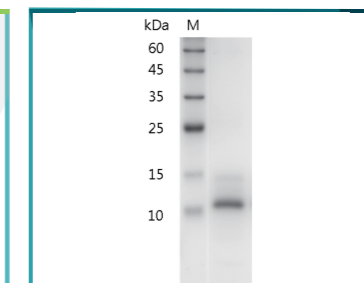
Cat. No.	Product name	Cat. No.	Product name
LDG027PHM	Human IL-6R, His Tag, CHO	LDG027PHE	Human IL-23 (p19), His Tag, E. coli
LDG009PHE	Human IL-7, His Tag, E. coli	LDG028PHE	Human IL-24, His Tag, E. coli
LDG010PHE	Human IL-8 (aa 28-99), His Tag, E. coli	LDG029PHE	Human IL-25, His Tag, E. coli
LDG011PHE	Human IL-9, His Tag, E. coli	LDG030PHE	Human IL-26, His Tag, E. coli
LDG012PHE	Human IL-10, His Tag, E. coli	LDG031PHE	Human IL-27 (EBI3), His Tag, E. coli
LDG013PHE	Human IL-11, His Tag, E. coli	LDG032PHE	Human IL-28A, His Tag, E. coli
LDG014PHE	Human IL-12 (p35), His Tag, E. coli	LDG097PHE	Human IL-28B, His Tag, E. coli
LDG015PHE	Human IL-12 (p40), His Tag, E. coli	LDG033PHE	Human IL-29, His Tag, E. coli
LDG006PHM	Human IL-12 (p70), His Tag, HEK293	LDG034PHE	Human IL-30, His Tag, E. coli
LDG016PHE	Human IL-13, His Tag, E. coli	LDG035PHE	Human IL-31, His Tag, E. coli
LDG017PHE	Human IL-15, His Tag, E. coli	LDG036PHE	Human IL-32 Alpha, His Tag, E. coli
LDG018PHE	Human IL-16 (aa 2-130), His Tag, E. coli	LDG037PHE	Human IL-33, His Tag, E. coli
LDG020PHE	Human IL-17B, His Tag, E. coli	LDG038PHE	Human IL-34, His Tag, E. coli
LDG096PHE	Human IL-17D, His Tag, E. coli	LDG039PHE	Human IL-36 Alpha, His Tag, E. coli
LDG021PHE	Human IL-17F, His Tag, E. coli	LDG040PHE	Human IL-36 Beta, His Tag, E. coli
LDG184PHE	Human IL-18, Tag Free, E. coli	LDG041PHE	Human IL-36 Gamma, His Tag, E. coli
LDG022PHM	Human IL-18BP, His Tag, HEK293	LDG095PHE	Human IL-36RA, His Tag, E. coli
LDG023PHE	Human IL-19, His Tag, E. coli	LDG042PHE	Human IL-37, His Tag, E. coli
LDG024PHE	Human IL-20, His Tag, E. coli	LDG043PHE	Human IL-38, His Tag, E. coli
LDG025PHE	Human IL-21, His Tag, E. coli	LDG048PHE	Human TNF Alpha, His Tag, E. coli
LDG026PHE	Human IL-22, His Tag, E. coli	LDG023PHM	Human TNF Alpha, His Tag, HEK293

Cat. No.	Product name	Cat. No.	Product name
LDG052PHE	Human MIF, His Tag, E. coli	LDG125PHE	Human LIGHT, His Tag, E. coli
LDG065PHE	Human TPO, His Tag, E. coli	LDG126PHE	Human TL1A, His Tag, E. coli
LDG115PHE	Human TNF Beta, His Tag, E. coli	LDG167PHE	Human LIF, His Tag, E. coli
LDG121PHE	Human TRAIL, His Tag, E. coli	LDG182PHE	Human PROS1, His-SUMO Tag, E. coli
LDG122PHE	Human RANKL, His Tag, E. coli	LDG024PHM	Human Wnt-3a Conditioned Medium
LDG123PHE	Human TWEAK, His Tag, E. coli		

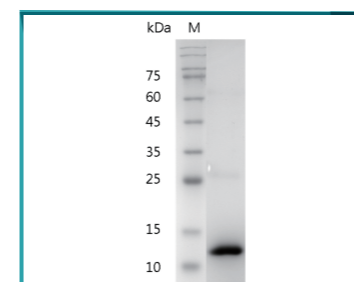
### Highlighted Products



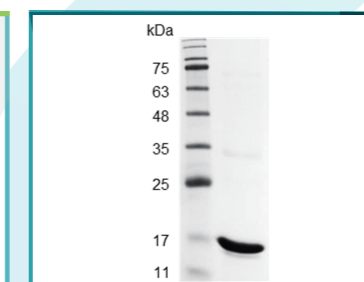
Human IL-4, His Tag, E. coli recombinant protein (LDG006PHE) was separated on SDS-PAGE under the reducing condition and visualized by Coomassie Blue staining.



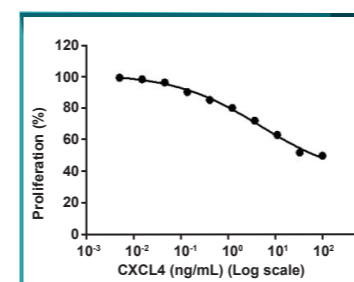
Human IL-15, His Tag, E. coli recombinant protein (LDG017PHE) was separated on SDS-PAGE under the reducing condition and visualized by Coomassie Blue staining.



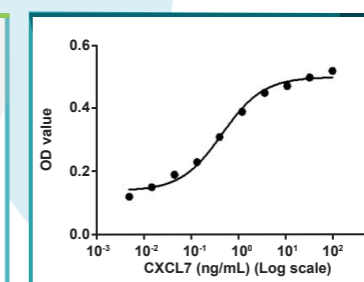
Human BMP-2, His Tag, E. coli recombinant protein (LDG099PHE) was separated on SDS-PAGE under the reducing condition and visualized by Coomassie Blue staining.



Human IFN Gamma, His Tag, E. coli recombinant protein (LDG047PHE) was separated on SDS-PAGE under the reducing condition and visualized by Coomassie Blue staining.



Human CXCL4, His Tag, E. coli recombinant protein (LDG156PHE) inhibited FGF2-induced HUVEC cell proliferation, with the ED<sub>50</sub> at 4.87 mg/mL.



Human CXCL7, His Tag, E. coli recombinant protein (LDG159PHE) showed a chemoattractive effect on CXCR2-expressing BaF3 cells, with the ED<sub>50</sub> at 0.47 ng/mL.

# Cytokines

## Mouse

Cat. No.	Product name	Cat. No.	Product name
LDG067PME	Mouse 4-1BBL, His Tag, E. coli	LDG035PME	Mouse IL-12 (p40), His Tag, E. coli
LDG075PME	Mouse BAFF, His Tag, E. coli	LDG036PME	Mouse IL-13, His Tag, E. coli
LDG063PME	Mouse BMP-4, His Tag, E. coli	LDG037PME	Mouse IL-15, His Tag, E. coli
LDG077PME	Mouse FasL, His Tag, E. coli	LDG038PME	Mouse IL-16, His Tag, E. coli
LDG073PME	Mouse Flt-3 Ligand, His Tag, E. coli	LDG039PME	Mouse IL-17A, His Tag, E. coli
LDG002PME	Mouse HMGB1, His Tag, E. coli	LDG040PME	Mouse IL-17B, His Tag, E. coli
LDG064PME	Mouse IFN Alpha 1a, His Tag, E. coli	LDG041PME	Mouse IL-17D, His Tag, E. coli
LDG065PME	Mouse IFN Beta 1a, His Tag, E. coli	LDG042PME	Mouse IL-17F, His Tag, E. coli
LDG066PME	Mouse IFN Gamma, His Tag, E. coli	LDG043PME	Mouse IL-18, His Tag, E. coli
LDG022PME	Mouse IL-1 Alpha, His Tag, E. coli	LDG044PME	Mouse IL-19, His Tag, E. coli
LDG023PME	Mouse IL-1 Beta, His Tag, E. coli	LDG024PME	Mouse IL-1RA, His Tag, E. coli
LDG025PME	Mouse IL-2, His Tag, E. coli	LDG045PME	Mouse IL-20, His Tag, E. coli
LDG026PME	Mouse IL-3, His Tag, E. coli	LDG046PME	Mouse IL-21, His Tag, E. coli
LDG027PME	Mouse IL-4, His Tag, E. coli	LDG047PME	Mouse IL-22, His Tag, E. coli
LDG028PME	Mouse IL-5, His Tag, E. coli	LDG048PME	Mouse IL-24, His Tag, E. coli
LDG029PME	Mouse IL-6, His Tag, E. coli	LDG049PME	Mouse IL-25, His Tag, E. coli
LDG030PME	Mouse IL-7, His Tag, E. coli	LDG050PME	Mouse IL-27 (EBI3), His Tag, E. coli
LDG031PME	Mouse IL-9, His Tag, E. coli	LDG051PME	Mouse IL-28A, His Tag, E. coli
LDG032PME	Mouse IL-10, His Tag, E. coli	LDG052PME	Mouse IL-28B, His Tag, E. coli
LDG033PME	Mouse IL-11, His Tag, E. coli	LDG053PME	Mouse IL-30, His Tag, E. coli
LDG034PME	Mouse IL-12 (p35), His Tag, E. coli	LDG054PME	Mouse IL-31, His Tag, E. coli

Cat. No.	Product name	Cat. No.	Product name
LDG055PME	Mouse IL-33, His Tag, E. coli	LDG084PME	Mouse MIF, His Tag, E. coli
LDG056PME	Mouse IL-34, His Tag, E. coli	LDG079PME	Mouse OX40L, His Tag, E. coli
LDG057PME	Mouse IL-36 Alpha, His Tag, E. coli	LDG080PME	Mouse RANKL, His Tag, E. coli
LDG058PME	Mouse IL-36 Gamma, His Tag, E. coli	LDG061PME	Mouse TNF Alpha, His Tag, E. coli
LDG059PME	Mouse IL-36RA, His Tag, E. coli	LDG062PME	Mouse TNF Beta, His Tag, E. coli
LDG060PME	Mouse IL-38, His Tag, E. coli	LDG081PME	Mouse TRAIL, His Tag, E. coli
LDG019PME	Mouse LIF, His Tag, E. coli	LDG082PME	Mouse TWEAK, His Tag, E. coli
LDG078PME	Mouse LIGHT, His Tag, E. coli		

# Cytokines

## Swine

Cat. No.	Product name	Cat. No.	Product name
LDG018PSE	Swine BMP-4, His Tag, E. coli	LDG012PSE	Swine IL-6, His Tag, E. coli
LDG024PSE	Swine Flt-3 Ligand, His Tag, E. coli	LDG013PSE	Swine IL-8, His Tag, E. coli
LDG019PSE	Swine IFN Gamma, His Tag, E. coli	LDG014PSE	Swine IL-10, His Tag, E. coli
LDG008PSE	Swine IL-1 Alpha, His Tag, E. coli	LDG015PSE	Swine IL-15, His Tag, E. coli
LDG009PSE	Swine IL-1 Beta, His Tag, E. coli	LDG016PSE	Swine IL-17A, His Tag, E. coli
LDG010PSE	Swine IL-2, His Tag, E. coli	LDG017PSE	Swine TNF Alpha, His Tag, E. coli
LDG011PSE	Swine IL-4, His Tag, E. coli		

# Growth Factors

## Human

Cat. No.	Product name	Cat. No.	Product name
LDG064PHE	Human Activin B, His Tag, E. coli	LDG084PHE	Human FGF-20, His Tag, E. coli
LDG129PHE	Human Beta-NGF, His Tag, E. coli	LDG085PHE	Human FGF-21, His Tag, E. coli
LDG067PHE	Human FGF-1, His Tag, E. coli	LDG086PHE	Human FGF-22, His-SUMO Tag, E. coli
LDG189PHE	Human FGF-2, Tag free, E. coli	LDG087PHE	Human FGF-23, His Tag, E. coli
LDG069PHE	Human FGF-3, His Tag, E. coli	LDG170PHE	Human G-CSF, His Tag, E. coli
LDG070PHE	Human FGF-4, His Tag, E. coli	LDG044PHE	Human GM-CSF, His Tag, E. coli
LDG071PHE	Human FGF-5, His Tag, E. coli	LDG059PHE	Human HDGF, His Tag, E. coli
LDG072PHE	Human FGF-6, His Tag, E. coli	LDG088PHE	Human IGF-I, His Tag, E. coli
LDG073PHE	Human FGF-8a, His Tag, E. coli	LDG089PHE	Human IGF-II, His Tag, E. coli
LDG074PHE	Human FGF-8b, His Tag, E. coli	LDG093PHE	Human M-CSF, His Tag, E. coli
LDG075PHE	Human FGF-9, His Tag, E. coli	LDG013PHM	Human R-Spondin 1, His-SUMO Tag, HEK293
LDG076PHE	Human FGF-10, His Tag, E. coli	LDG173PHE	Human SCF, His Tag, E. coli
LDG137PHE	Human FGF-11 Isoform 1, His Tag, E. coli	LDG177PHE	Human Sonic Hedgehog (C24II), His-SUMO Tag, E. coli
LDG138PHE	Human FGF-11 Isoform 2, His Tag, E. coli	LDG017PVM	Human Sonic Hedgehog (C24II), Tag Free, HEK293
LDG077PHE	Human FGF-12, His Tag, E. coli	LDG090PHE	Human TGF Alpha, His Tag, E. coli
LDG078PHE	Human FGF-13, His Tag, E. coli	LDG020PHM	Human TGF Beta 1, His Tag, HEK293
LDG079PHE	Human FGF-14, His Tag, E. coli	LDG091PHE	Human TGF Beta 2, His Tag, E. coli
LDG080PHE	Human FGF-16, His Tag, E. coli	LDG152PHE	Human TGF Beta 3, His Tag, E. coli
LDG081PHE	Human FGF-17, His Tag, E. coli	LDG060PHE	Human VEGF121, His Tag, E. coli
LDG082PHE	Human FGF-18, His Tag, E. coli	LDG168PHE	Human VEGF165, His Tag, E. coli
LDG083PHE	Human FGF-19, His Tag, E. coli	LDG186PHE	Human Activin A, Tag Free, E. coli

Cat. No.	Product name	Cat. No.	Product name
LDG183PHE	Human EGF, His Tag, E. coli	LDG026PHM	Human M-CSF, His Tag, HEK293
LDG017PHM	Human Noggin, His Tag, HEK293	LDG031PHM	Human Ang-2, His Tag, CHO
LDG021PHM	Human HGF, His Tag, HEK293		

# Growth Factors

## Mouse

Cat. No.	Product name	Cat. No.	Product name
LDG001PME	Mouse M-CSF, His Tag, E. coli	LDG071PME	Mouse IGF-II, His Tag, E. coli
LDG003PME	Mouse GM-CSF, His Tag, E. coli	LDG072PME	Mouse EGF, His Tag, E. coli
LDG004PME	Mouse G-CSF, His Tag, E. coli	LDG074PME	Mouse HDGF, His Tag, E. coli
LDG020PME	Mouse VEGF121, His Tag, E. coli	LDG083PME	Mouse Activin B, His Tag, E. coli
LDG021PME	Mouse VEGF165, His Tag, E. coli	LDG090PME	Mouse Beta-NGF, His Tag, E. coli
LDG068PME	Mouse TGF Beta 1, His Tag, E. coli	LDG092PME	Mouse FGF-21, His Tag, E. coli
LDG069PME	Mouse FGF-2, His Tag, E. coli	LDG001PMM	Mouse Noggin, Fc Tag, HEK293
LDG070PME	Mouse IGF-I, His Tag, E. coli		

# Growth Factors

## Swine

Cat. No.	Product name	Cat. No.	Product name
LDG001PSE	Swine GM-CSF, His Tag, E. coli	LDG021PSE	Swine FGF-2, His Tag, E. coli
LDG007PSE	Swine VEGF, His Tag, E. coli	LDG022PSE	Swine IGF-I, His Tag, E. coli
LDG020PSE	Swine TGF Beta 1, His Tag, E. coli	LDG023PSE	Swine EGF, His Tag, E. coli

# Chemokines

## Human

Cat. No.	Product name	Cat. No.	Product name
LDG164PHE	Human CCL2, His Tag, E. coli	LDG158PHE	Human CXCL6, His Tag, E. coli
LDG180PHE	Human CCL3, His Tag, E. coli	LDG159PHE	Human CXCL7, His Tag, E. coli
LDG166PHE	Human CCL4, Tag Free, E. coli	LDG160PHE	Human CXCL9, His Tag, E. coli
LDG153PHE	Human CXCL1, His Tag, E. coli	LDG161PHE	Human CXCL10, His Tag, E. coli
LDG154PHE	Human CXCL2, His Tag, E. coli	LDG162PHE	Human CXCL11, His Tag, E. coli
LDG155PHE	Human CXCL3, His Tag, E. coli	LDG053PHE	Human CXCL12 (aa 24-88), His Tag, E. coli
LDG156PHE	Human CXCL4, His Tag, E. coli	LDG163PHE	Human CXCL13, His Tag, E. coli
LDG157PHE	Human CXCL5, His Tag, E. coli		

# Chemokines

## Mouse

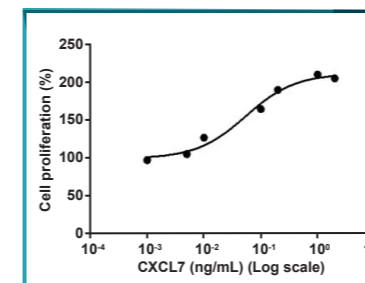
Cat. No.	Product name	Cat. No.	Product name
LDG005PME	Mouse CXCL1, Tag Free, E. coli	LDG012PME	Mouse CXCL10, His Tag, E. coli
LDG006PME	Mouse CXCL2, His Tag, E. coli	LDG013PME	Mouse CXCL11, His Tag, E. coli
LDG007PME	Mouse CXCL3, His Tag, E. coli	LDG014PME	Mouse CXCL12, His Tag, E. coli
LDG008PME	Mouse CXCL5, His Tag, E. coli	LDG015PME	Mouse CXCL16, His Tag, E. coli
LDG009PME	Mouse CXCL7 (aa 40-113), His Tag, E. coli	LDG016PME	Mouse CCL2, His Tag, E. coli
LDG010PME	Mouse CXCL7 (aa 48-109), His Tag, E. coli	LDG017PME	Mouse CCL3, His Tag, E. coli
LDG011PME	Mouse CXCL9, His Tag, E. coli	LDG018PME	Mouse CCL4, His Tag, E. coli

# Chemokines

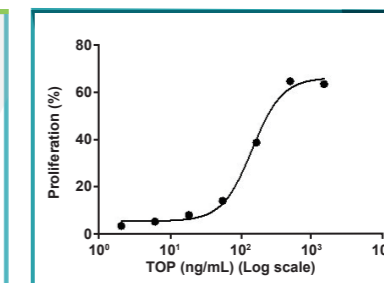
## Swine

Cat. No.	Product name	Cat. No.	Product name
LDG002PSE	Swine CXCL9, His Tag, E. coli	LDG005PSE	Swine CXCL13, His Tag, E. coli
LDG003PSE	Swine CXCL10, His Tag, E. coli	LDG006PSE	Swine CCL2, His Tag, E. coli
LDG004PSE	Swine CXCL11, His Tag, E. coli		

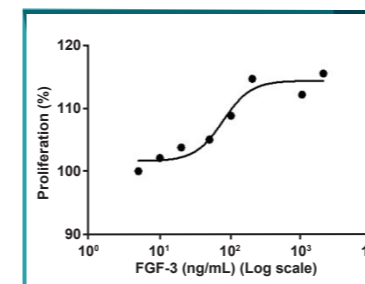
### Highlighted Products



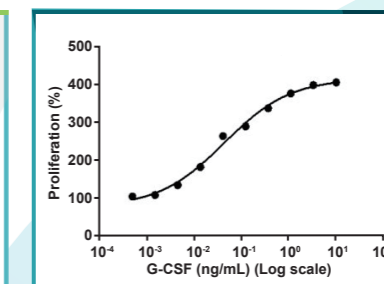
Human GM-CSF, His Tag, E. coli recombinant protein (LDG044PHE) induced TF-1 cells proliferation, with the ED<sub>50</sub> at 54.7 pg/mL.



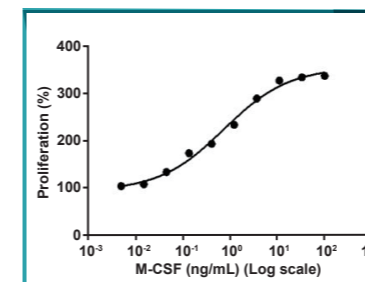
Human TPO, His Tag, E. coli recombinant protein (LDG065PHE) induced HUVEC cell proliferation, with the ED<sub>50</sub> at 2.5 ng/mL.



Human FGF-3, His Tag, E. coli recombinant protein (LDG069PHE) induced 3T3 cells proliferation, with the ED<sub>50</sub> at 77.51 ng/mL.



Human G-CSF, His Tag, E. coli recombinant protein (LDG170PHE) induced NFS-60 cell proliferation, with the ED<sub>50</sub> at 0.044 ng/mL.



Human M-CSF, His Tag, E. coli recombinant protein (LDG093PHE) induced NFS-60 cell proliferation, with the ED<sub>50</sub> at 0.75 ng/mL.

## Enzymes

Cat. No.	Product name	Cat. No.	Product name
LDG062PHE	Human PGA5, His Tag, E. coli	LDG174PHE	Human ENO1, His Tag, E. coli
LDG056PHE	Human MMP2 (Active), His Tag, E. coli	LDG181PHE	Human MTM1, His Tag, E. coli
LDG057PHE	Human MMP7 (Active), His Tag, E. coli	LDG0018RG	RNase R
LDG055PHE	Human MMP7 (Proenzyme), His Tag, E. coli	LDG091PME	Mouse ENO1, His Tag, E. coli
LDG169PHE	Human OGG1, His Tag, E. coli		

## Neurotrophins Human

Cat. No.	Product name	Cat. No.	Product name
LDG130PHE	Human BDNF, His Tag, E. coli	LDG135PHE	Human Midkine, His Tag, E. coli
LDG131PHE	Human CNTF, His Tag, E. coli	LDG136PHE	Human Neurturin, His Tag, E. coli
LDG132PHE	Human GDNF, His Tag, E. coli	LDG185PHE	Human Heregulin Beta 1, His Tag, E. coli
LDG133PHE	Human CDNF, His Tag, E. coli	LDG188PHE	Human GFAP, His Tag, E. coli
LDG134PHE	Human Pleiotrophin, His Tag, E. coli		

## Neurotrophins Mouse

Cat. No.	Product name	Cat. No.	Product name
LDG085PME	Mouse CDNF, His Tag, E. coli	LDG088PME	Mouse Midkine, His Tag, E. coli
LDG086PME	Mouse CNTF, His Tag, E. coli	LDG089PME	Mouse Neurturin, His Tag, E. coli
LDG087PME	Mouse GDNF, His Tag, E. coli		

## Lectins

Cat. No.	Product name	Cat. No.	Product name
LDG140PHE	Human Galectin-1, His Tag, E. coli	LDG146PHE	Human Galectin-9, His Tag, E. coli
LDG141PHE	Human Galectin-2, His Tag, E. coli	LDG147PHE	Human Galectin-10, His Tag, E. coli
LDG142PHE	Human Galectin-3, His Tag, E. coli	LDG148PHE	Human Galectin-12, His Tag, E. coli
LDG143PHE	Human Galectin-4, His Tag, E. coli	LDG149PHE	Human Galectin-13, His Tag, E. coli
LDG144PHE	Human Galectin-7, His Tag, E. coli	LDG150PHE	Human Galectin-14, His Tag, E. coli
LDG145PHE	Human Galectin-8, His Tag, E. coli	LDG151PHE	Human Galectin-16, His Tag, E. coli

## CD Antigens

Cat. No.	Product name	Cat. No.	Product name
LDG003POM	Canine PD-L1 Protein, His Tag, HEK293	LDG004PMM	Mouse PD-1, His Tag, HEK293
LDG004POM	Canine CTLA-4 Protein, His Tag, HEK293	LDG005PMM	Mouse CTLA-4, His Tag, HEK293
LDG007POM	Feline PD-L1, His Tag, HEK293	LDG007PMM	Mouse TNFR-1, His Tag, CHO
LDG008POM	Feline CTLA-4, His Tag, HEK293	LDG008PMM	Mouse CD4, His Tag, CHO
LDG018PHM	Human PD-L1, His Tag, HEK293	LDG009PMM	Mouse CD19, His Tag, CHO
LDG025PHM	Human LAG-3, His Tag, HEK293	LDG010PMM	Mouse CD16, His Tag, CHO
LDG028PHM	Human PD-1, His Tag, CHO	LDG011PMM	Mouse CD36, His Tag, CHO
LDG032PHM	Human CAM6, His Tag, CHO	LDG012PMM	Mouse CD83, His Tag, CHO
LDG033PHM	Human CD1d, His Tag, CHO	LDG013PMM	Mouse PD-L2, His Tag, CHO
LDG034PHM	Human CD7, His Tag, CHO	LDG014PMM	Mouse Clec9a, Fc Tag, CHO
LDG002PMM	Mouse PD-L1, His Tag, HEK293	LDG016PMM	Mouse TNFR-2, His Tag, CHO
LDG003PMM	Mouse CD8 Alpha, His Tag, HEK293	LDG018PMM	Mouse CD38, His Tag, CHO



## CD Antigens

Cat. No.	Product name	Cat. No.	Product name
LDG019PMM	Mouse CD138, His Tag, CHO	LDG021PMM	Mouse NKG2D, His Tag, CHO
LDG020PMM	Mouse EpCAM, His Tag, CHO	LDG023PMM	Mouse ICAM, His Tag, CHO

## Other Proteins

Cat. No.	Product name	Cat. No.	Product name
LDG001PHY	Human Holo-Transferrin Protein	LDG058PHE	Human Annexin V, His Tag, E. coli
LDG002PHY	Human Serum Albumin	LDG176PHE	Human Irisin, Tag Free, E. coli
LDG009PHM	Human ACE2, Fc Tag, HEK293	LDG179PHE	Human NF-L, His-SUMO Tag, E. coli
LDG015PHM	Human IGFBP7, His-SUMO Tag, HEK293	LDG187PHE	Human Insulin Protein, E. coli
LDG016PHM	Human GM2A, His Tag, HEK293	LDG006PMM	Mouse Napsin A, His Tag, CHO
LDG029PHM	Human FIXa, His Tag, CHO	LDG015PMM	Mouse VISTA, His Tag, CHO
LDG030PHM	Human FX, His Tag, CHO	LDG017PMM	Mouse CAIX, His Tag, CHO
LDG035PHM	Human MSLN, His Tag, CHO	LDG022PMM	Mouse PSMA, His Tag, CHO
LDG076PME	Mouse CD27L, His Tag, E. coli	LDG024PMM	Mouse ASGPR, His Tag, CHO
LDG118PHE	Human CD27L, His Tag, E. coli	LDG025PMM	Mouse CDX2, His Tag, CHO
LDG014PHM	Human CD28 ECD, His-SUMO Tag, HEK293	LDG026PMM	Mouse FOLR1, His Tag, CHO
LDG119PHE	Human CD30L, His Tag, E. coli	LDG032PVE	EGFP, His Tag, E. coli
LDG066PHE	Human CD326, His Tag, E. coli	LDG024POE	C. difficile Toxin B Protein, His Tag, E. coli
LDG116PHE	Human CD40L, His Tag, E. coli	LDG025POE	Mycoplasma pneumoniae P1 Protein, His Tag, E. coli
LDG054PHE	Human RAGE, His Tag, E. coli		

## Virus-Like Particles

Cat. No.	Product name	Cat. No.	Product name
LDG002PVM	SARS-CoV-2 Virus-Like Particles	LDG018PVM	SARS-CoV-2 Virus-Like Particles B.1.351 (Beta)
LDG011PVM	SARS-CoV-2 Virus-Like Particles B.1.1.7 (Alpha)	LDG022PVM	SARS-CoV-2 Virus-Like Particles B1.1.529 (Omicron)
LDG012PVM	SARS-CoV-2 Virus-Like Particles B.1.617.2 (Delta)		

## Viral Antigens

### SARS-CoV-2

Cat. No.	Product name	Cat. No.	Product name
LDG004PVE	SARS-CoV-2 Nucleocapsid Protein, Tag Free, E. coli	LDG006PVE	SARS-CoV-2 Spike Protein (RBD), His Tag, E. coli
LDG005PVM	SARS-CoV Nucleocapsid Protein, His-SUMO Tag, HEK293	LDG005PVE	SARS-CoV-2 Spike Protein (S1 Subunit), His Tag, E. coli
LDG006PVM	SARS-CoV-2 Nucleocapsid Protein, His-SUMO Tag, HEK293	LDG013PVM	SARS-CoV-2 Spike Protein RBD (Delta B1.617.2 Variant), His-SUMO Tag, HEK293
LDG016PVE	SARS-CoV-2 Nucleocapsid Protein (Omicron B1.1.529 Variant), Tag Free, E. coli	LDG016PVM	SARS-CoV-2 Spike Protein RBD, His-SUMO Tag, HEK293
LDG017PVE	SARS-CoV-2 Nucleocapsid Protein (IHU B.1.640.2 Variant), Tag Free, E. coli	LDG009PVM	SARS-CoV-2 Trimeric Spike Protein (Beta B1.351 Variant), His Tag, HEK293
LDG021PVM	SARS-CoV-2 Nucleocapsid Protein (Omicron B1.1.529 Variant), Tag Free, HEK293	LDG008PVM	SARS-CoV-2 Trimeric Spike Protein (Delta B1.617.2 Variant), His Tag, HEK293
LDG007PHM	SARS-CoV-2 ORF8 Protein (aa 16-121), His-SUMO Tag, HEK293	LDG010PHM	SARS-CoV-2 Trimeric Spike Protein, His Tag, HEK293

## Viral Antigens

### Dengue Virus

Cat. No.	Product name	Cat. No.	Product name
LDG001PVM	DENV NS1 Protein, His Tag, HEK293	LDG003PVE	DENV NS1 Protein, His Tag, E. coli

## Viral Antigens

### Enterovirus

Cat. No.	Product name
LDG029PVE	Enterovirus A71 (EV-A71) VP1 Protein, His Tag, E. coli

## Viral Antigens

### Monkeypox Virus

Cat. No.	Product name	Cat. No.	Product name
LDG023PVM	Monkeypox Virus (MPXV) A29L Protein, His-SUMO Tag, HEK 293	LDG027PVE	Monkeypox Virus (MPXV) L1R Protein, His Tag, E. coli
LDG026PVE	Monkeypox Virus (MPXV) A29L Protein, His Tag, E. coli	LDG028PVE	Monkeypox Virus (MPXV) M1R Protein, His-SUMO Tag, E. coli

## Viral Antigens

### Influenza Virus

Cat. No.	Product name	Cat. No.	Product name
LDG018PVE	Influenza A H3N2 (A/Hong Kong/1/1968) Nucleocapsid Protein, His Tag, E. coli	LDG021PVE	Influenza A H3N2 (A/Washington/658/2019) Nucleocapsid Protein, His Tag, E. coli
LDG019PVE	Influenza A H1N1 (A/New York/1682/2009) Nucleocapsid Protein, His Tag, E. coli	LDG022PVE	Influenza B (B/Washington/02/2019) Nucleocapsid Protein, His Tag, E. coli
LDG020PVE	Influenza A H7N9 (A/Shanghai/02/2013) Nucleocapsid Protein, His Tag, E. coli		

## Viral Antigens

### RSV

Cat. No.	Product name	Cat. No.	Product name
LDG024PVE	Human Respiratory Syncytial Virus A (RSV-A, Strain A2) Nucleocapsid Protein, His Tag, E. coli	LDG023PVE	Human Respiratory Syncytial Virus B (RSV-B) Nucleocapsid Protein, His Tag, E. coli
LDG025PVE	Human Respiratory Syncytial Virus A (RSV-A, Strain S2) Nucleocapsid Protein, His Tag, E. coli	LDG024PVM	Human Respiratory Syncytial Virus B (RSV-B) Fusion Glycoprotein F0, Fc Tag, HEK293

## Viral Antigens

### Other Viruses

Cat. No.	Product name	Cat. No.	Product name
LDG003PVM	HCoV-NL63 Nucleocapsid Protein, His-SUMO Tag, HEK293	LDG009PVE	HCoV-229E Nucleocapsid Protein, His Tag, E. coli
LDG004PVM	MERS-CoV Nucleocapsid Protein, His-SUMO Tag, HEK293	LDG025PVM	Human Adenovirus Serotype 3 Hexon Protein, Tag Free, HEK293
LDG007PVE	HCoV-OC43 Nucleocapsid Protein, His Tag, E. coli	LDG030PVE	HIV-1 Capsid Protein p24, His Tag, E. coli
LDG008PVE	HCoV-HKU1 Nucleocapsid Protein, His Tag, E. coli	LDG031PVE	PRRSV Nucleocapsid Protein, His Tag, E. coli

## Primary Antibodies

### Disease Markers

Cat. No.	Product name	Host & Clonality	Applications
LDG0166YA	Anti-D-Dimer Antibody [Clone DD01]	Mouse mAb	ELISA, CLIA, LFIA
LDG0167YA	Anti-D-Dimer Antibody [Clone DD02]	Mouse mAb	ELISA, CLIA, LFIA
LDG0165YA	Anti-D-Dimer Antibody [Clone DD03]	Mouse mAb	ELISA, CLIA, LFIA
LDG0061YA	Anti-HbA1c Antibody [Clone 1D3]	Mouse mAb	ELISA, IP
LDG0062YA	Anti-HbA1c Antibody [Clone 9B7]	Mouse mAb	ELISA, IP
LDG0103YA	Anti- $\beta$ -amyloid Antibody [Clone 85-1]	Mouse mAb	ELISA, Western Blot

## Primary Antibodies Disease Markers

Cat. No.	Product name	Host & Clonality	Applications
LDG0057YA	Anti-HbA1c Antibody [Clone 6F12]	Mouse mAb	ELISA, IP
LDG0060YA	Anti-HbA1c Antibody [Clone 5G4]	Mouse mAb	ELISA, IP
LDG0191YA	Anti-HbA1c Antibody [Clone 6-2]	Mouse mAb	ELISA, LFIA
LDG0222YA	Anti-Flavivirus E IgG Antibody	Human IgG	ELISA, LFA
LDG0223YA	Anti-Flavivirus E IgM Antibody	Human IgM	ELISA, LFA

## Primary Antibodies Anti-Tag

Cat. No.	Product name	Host & Clonality	Applications
LDG0004YB	Anti-cMyc Tag Antibody [Clone 66-38]	Mouse mAb	ELISA, WB, IP, IFA, FACS
LDG0009YB	Anti-DYKDDDDK Antibody [Clone 108-21]	Mouse mAb	ELISA, WB, IFA, IHC, IP
LDG0008YB	Anti-EGFP Antibody [Clone 42-2]	Mouse mAb	ELISA, WB, IP, IFA, FACS
LDG0005YB	Anti-GST Tag Antibody [Clone 89-3]	Mouse mAb	ELISA, WB, IP, IFA, FACS
LDG0002YB	Anti-HA Tag Antibody [Clone 98-106]	Mouse mAb	ELISA, WB, IP, IFA, FACS
LDG0001YB	Anti-His Tag Antibody [Clone 14-4]	Mouse mAb	ELISA, WB, IP, IFA, FACS
LDG0007YB	Anti-mCherry Antibody [Clone 45-5]	Mouse mAb	ELISA, WB, IP, IFA, FACS
LDG0006YB	Anti-SUMO Tag Antibody [Clone 2-2]	Mouse mAb	ELISA, WB, IP
LDG0003YB	Anti-V5 Tag Antibody [Clone 7-1-8]	Mouse mAb	ELISA, WB, IP, IFA, FACS

## Primary Antibodies Anti-Viral Antigens

Cat. No.	Product name	Host & Clonality	Applications
LDG0001YA	Anti-DENV NS1 Antibody [Clone 1D33]	Mouse mAb	ELISA, WB, IFA, FACS
LDG0006YA	Anti-DENV NS3 Antibody [Clone 15-5]	Mouse mAb	ELISA, WB, IFA, FACS
LDG0007YA	Anti-DENV NS5 Antibody [Clone 37-2]	Mouse mAb	ELISA, WB, IFA, FACS
LDG0008YA	Anti-DENV NS4B Antibody [Clone 24-1]	Mouse mAb	ELISA, WB, IFA, FACS
LDG0009YA	Anti-DENV M Antibody [Clone 31-1]	Mouse mAb	ELISA, WB, IFA, FACS
LDG0011YA	Anti-DENV E Antibody [Clone 102-1]	Mouse mAb	ELISA, WB, IFA, FACS
LDG0013YA	Anti-DENV pr Antibody [Clone 47-2]	Mouse mAb	ELISA, WB, IFA, FACS
LDG0014YA	Anti-DENV Capsid Antibody [Clone 25-4]	Mouse mAb	ELISA, WB, IFA, FACS
LDG0202YA	Anti-DENV NS1 IgG Antibody	Human recAb	ELISA, LFA
LDG0203YA	Anti-DENV NS1 IgM Antibody	Human recAb	ELISA, LFA
LDG0204YA	Anti-DENV E IgG Antibody	Human recAb	ELISA, LFA
LDG0205YA	Anti-DENV E IgM Antibody	Human recAb	ELISA, LFA
LDG0050YA	Anti-HBV PreS1 Antibody [Clone S101]	Mouse mAb	ELISA, WB, IFA
LDG0051YA	Anti-HBV PreS2 Antibody [Clone S201]	Mouse mAb	ELISA, WB, IFA
LDG0052YA	Anti-HBsAg Antibody [Clone 2H11]	Mouse mAb	ELISA, WB, IFA
LDG0053YA	Anti-HBsAg Antibody [Clone 3D5]	Mouse mAb	ELISA, WB, IFA
LDG0144YA	Anti-Influenza A Virus NP Antibody [clone IA02]	Mouse mAb	ELISA, IFA, CLIA, LFIA
LDG0152YA	Anti-Influenza A Virus NP Antibody [clone IA03]	Mouse mAb	ELISA, IFA, CLIA, LFIA
LDG0153YA	Anti-Influenza A Virus NP Antibody [clone IA04]	Mouse mAb	ELISA, IFA, CLIA, LFIA
LDG0089YA	Anti-Influenza A Virus NP Antibody [Clone LGA4]	Human recAb	ELISA, IFA, FACS
LDG0090YA	Anti-Influenza A Virus NP Antibody [Clone LGA7]	Human recAb	ELISA, IFA, FACS, Lateral Flow

# Primary Antibodies

## Anti-Viral Antigens

Cat. No.	Product name	Host & Clonality	Applications
LDG0171YA	Anti-Influenza A Virus NP Antibody [Clone LGA3]	Human recAb	ELISA, CLIA, LFIA
LDG0172YA	Anti-Influenza A Virus NP Antibody [clone IA05]	Mouse mAb	ELISA, IFA, CLIA, LFIA
LDG0173YA	Anti-Influenza A Virus NP Antibody [clone IA06]	Mouse mAb	ELISA, CLIA
LDG0212YA	Anti-Influenza A Virus NP IgG Antibody	Human recAb	ELISA, LFA
LDG0213YA	Anti-Influenza A Virus NP IgM Antibody	Human recAb	ELISA, LFA
LDG0175YA	Anti-Influenza B Virus NP Antibody [clone IB05]	Mouse mAb	ELISA, CLIA, LFIA
LDG0176YA	Anti-Influenza B Virus NP Antibody [clone IB06]	Mouse mAb	ELISA, CLIA, LFIA
LDG0182YA	Anti-Influenza B Virus NP Antibody [Clone IB07]	Mouse mAb	ELISA, CLIA, LFIA
LDG0183YA	Anti-Influenza B Virus NP Antibody [Clone IB08]	Mouse mAb	ELISA, CLIA, LFIA
LDG0135YA	Anti-SARS-CoV & CoV-2 NP Antibody [Clone 103]	Human recAb	ELISA, CLIA, LFIA
LDG0136YA	Anti-SARS-CoV & CoV-2 NP Antibody [Clone 104]	Human recAb	ELISA, CLIA, LFIA
LDG0078YA	Anti-SARS-CoV & CoV-2 NP IgA Antibody	Human recAb	ELISA, WB, IFA
LDG0076YA	Anti-SARS-CoV & CoV-2 NP IgG Antibody	Human recAb	ELISA, WB, IFA
LDG0077YA	Anti-SARS-CoV & CoV-2 NP IgM Antibody	Human recAb	ELISA, WB, IFA
LDG0082YA	Anti-SARS-CoV & CoV-2 Spike IgA Antibody [Clone CR3022]	Human recAb	ELISA, NTRL, SPR, Crystallography
LDG0080YA	Anti-SARS-CoV & CoV-2 Spike IgG Antibody [Clone CR3022]	Human recAb	ELISA, NTRL, SPR, Crystallography
LDG0081YA	Anti-SARS-CoV & CoV-2 Spike IgM Antibody [Clone CR3022]	Human recAb	ELISA, NTRL, SPR, Crystallography
LDG0083YA	Anti-SARS-CoV-2 NP Antibody [Clone 102-7]	Mouse mAb	ELISA, WB, IFA
LDG0084YA	Anti-SARS-CoV-2 NP Antibody [Clone 109-5]	Mouse mAb	ELISA, WB, IFA
LDG0158YA	Anti-SARS-CoV-2 NP Antibody [Clone 74-2]	Mouse mAb	ELISA, CLIA, IFA
LDG0096YA	Anti-SARS-CoV-2 NP Antibody [Clone 88]	Mouse mAb	ELISA, WB, IFA

Cat. No.	Product name	Host & Clonality	Applications
LDG0086YA	Anti-SARS-CoV-2 Spike Antibody [Clone LGSV201]	Mouse mAb	ELISA, WB, IFA
LDG0161YA	Anti-African Swine Fever Virus (ASFV) p30 Antibody [Clone 16E1]	Mouse mAb	ELISA, CLIA
LDG0162YA	Anti-African Swine Fever Virus (ASFV) p30 Antibody [Clone 18H1]	Mouse mAb	ELISA, CLIA
LDG0147YA	Anti-MPXV A29L IgG Antibody [Clone MA01]	Mouse recAb	ELISA, WB, IFA, FACS
LDG0154YA	Anti-MPXV M1R VHH Antibody [Clone MM01]	V <sub>H</sub> -Human	ELISA, WB, IFA, FACS
LDG0155YA	Anti-MPXV M1R VHH Antibody [Clone MM02]	V <sub>H</sub> -Human	ELISA, WB, IFA, FACS
LDG0187YA	Anti-MPXV M1R Antibody [Clone 64-2]	Mouse mAb	ELISA, WB, IFA, LFIA
LDG0188YA	Anti-MPXV M1R Antibody [Clone 82-4]	Mouse mAb	ELISA, WB, IFA, LFIA
LDG0189YA	Anti-MPXV A29L Antibody [Clone 19-1]	Mouse mAb	ELISA, WB, IFA
LDG0190YA	Anti-MPXV L1R Antibody [Clone 5-1]	Mouse mAb	ELISA, WB, IFA
LDG0208YA	Anti-MPXV A29L IgG Antibody	Human recAb	ELISA, LFA
LDG0209YA	Anti-MPXV A29L IgM Antibody	Human recAb	ELISA, LFA
LDG0015YA	Anti-ZIKV NS1 Antibody [Clone ZK51]	Mouse mAb	ELISA, WB, IFA
LDG0016YA	Anti-ZIKV NS1 Antibody [Clone ZK243]	Mouse mAb	ELISA, WB, IFA, FACS
LDG0020YA	Anti-ZIKV E Antibody [Clone 125-1]	Mouse mAb	ELISA, WB, IFA
LDG0210YA	Anti-ZIKV NS1 IgG Antibody	Human recAb	ELISA, LFA
LDG0211YA	Anti-ZIKV NS1 IgM Antibody	Human recAb	ELISA, LFA
LDG0206YA	Anti-EV-A71 VP1 IgG Antibody	Human recAb	ELISA, LFA
LDG0207YA	Anti-EV-A71 VP1 IgM Antibody	Human recAb	ELISA, LFA



## Primary Antibodies Anti-Internal Control

Cat. No.	Product name	Host & Clonality	Applications
LDG0002YC	Anti-Alpha Tubulin Antibody [Clone 82-1]	Mouse mAb	ELISA, WB, IFA
LDG0009YC	Anti-GAPDH Antibody [Clone 38-1]	Mouse mAb	ELISA, WB, IFA

## Primary Antibodies Anti-Cytokines & Growth Factors

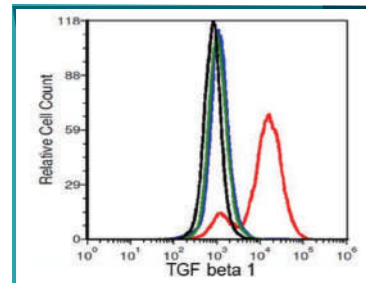
Cat. No.	Product name	Host & Clonality	Applications
LDG0033YA	Anti-IL-33 Antibody [Clone 7E8]	Mouse mAb	ELISA, WB, IFA, FACS
LDG0034YA	Anti-IL-38 Antibody [Clone 56-1]	Mouse mAb	ELISA, WB, IFA, FACS
LDG0023YA	Anti-IL-4 Antibody [Clone 6-5]	Mouse mAb	ELISA, WB, IFA, FACS
LDG0030YA	Anti-IL-8 Antibody [Clone 58-1]	Mouse mAb	ELISA, WB, IFA, FACS
LDG0039YA	Anti-RAGE Antibody [Clone 16-1]	Mouse mAb	ELISA, WB, IFA, FACS
LDG0047YA	Anti-TGF Beta 1 Antibody [Clone 51-3]	Mouse mAb	ELISA, WB, IFA, FACS
LDG0041YA	Anti-CXCL12 Antibody [Clone 69-2]	Mouse mAb	ELISA, WB, IFA, FACS
LDG0040YA	Anti-HDGF Antibody [Clone 83-5]	Mouse mAb	ELISA, WB, IFA, FACS
LDG0021YA	Anti-IL-1 Beta Antibody [Clone 4-1]	Mouse mAb	ELISA, WB, IFA, FACS
LDG0180YA	Anti-IL-6 Antibody [Clone 3-5]	Mouse mAb	ELISA
LDG0031YA	Anti-IL-10 Antibody [Clone 17-1]	Mouse mAb	ELISA, WB, IFA, FACS
LDG0032YA	Anti-IL-16 Antibody [Clone 72-15]	Mouse mAb	ELISA, WB, IFA, FACS
LDG0022YA	Anti-IL-2 Antibody [Clone 62-2]	Mouse mAb	ELISA, WB, IFA, FACS
LDG0026YA	Anti-IL-6 Antibody [Clone 9D9]	Mouse mAb	ELISA, WB, IFA, FACS
LDG0193YA	Anti-IL-5 Antibody [Clone 5-3]	Mouse mAb	ELISA

## Primary Antibodies Others

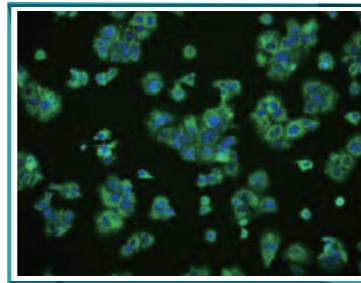
Cat. No.	Product name	Host & Clonality	Applications
LDG0069YA	Anti-CD3 Antibody [Clone OKT3]	Mouse mAb	IHC, FACS
LDG0178YA	Anti-CD28 Antibody [Clone 0AA01]	Human recAb	ELISA
LDG0179YA	Anti-CD28 Chimeric IgG Antibody [Clone 0AA02]	Human recAb	ELISA
LDG0070YA	Anti-CD326 Antibody [Clone 1H7]	Mouse mAb	ELISA, WB, IFA, FACS
LDG0045YA	Anti-c-Met Antibody [Clone 4A9]	Mouse mAb	ELISA, WB, IFA, FACS
LDG0095YA	Anti-EGFR Antibody [Clone C225] (Cetuximab Biosimilar)	Human recAb	ELISA, FACS, IHC, IFA
LDG0044YA	Anti-GIF Antibody [Clone 50-1]	Mouse mAb	ELISA, WB, IFA, FACS
LDG0055YA	Anti-Hemoglobin Antibody [Clone 07-01]	Mouse mAb	ELISA, IP
LDG0038YA	Anti-HMGB1 Antibody [Clone B1511]	Mouse mAb	ELISA, WB, IFA, FACS
LDG0093YA	Anti-HRV 3C Protease Antibody [Clone 12-4]	Mouse mAb	ELISA
LDG0094YA	Anti-HRV 3C Protease Antibody [Clone 23-1]	Mouse mAb	ELISA
LDG0091YA	Anti-HRV 3C Protease Antibody [Clone 3-1]	Mouse mAb	ELISA
LDG0092YA	Anti-HRV 3C Protease Antibody [Clone 5-8]	Mouse mAb	ELISA
LDG0140YA	Anti-Human Red Blood Cell Antibody	Human recAb	ELISA, CLIA, LFIA
LDG0042YA	Anti-MMP7 Antibody [Clone 1-4]	Mouse mAb	ELISA, WB, IFA, FACS
LDG0043YA	Anti-MMP7 Antibody [Clone 20-9]	Mouse mAb	ELISA, WB, IFA, FACS
LDG0054YA	Anti-PGA5 Antibody [Clone 85-5]	Mouse mAb	ELISA, WB, IFA, FACS
LDG0046YA	Anti-ST2L Antibody [Clone 9G15]	Mouse mAb	ELISA, WB, IFA, FACS

# Secondary Antibodies

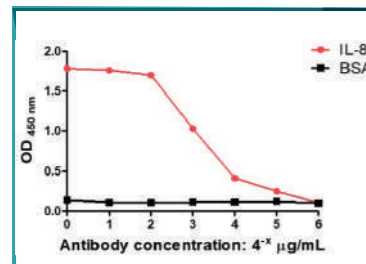
## Highlighted Products



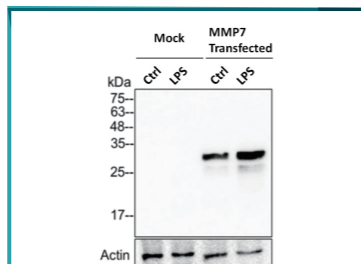
Anti-TGF Beta 1 Antibody [Clone 51-3] (LDG0047YA) was used to detect cells expressing TGF beta 1 (red), beta 2 (blue), and beta 3 (green) by flow cytometry analysis.



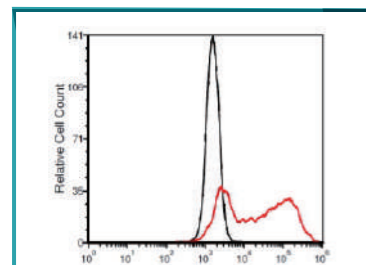
Anti-IL-4 Antibody [Clone 6-5] (LDG0023YA) was used to detect endogenous IL-4 expression in MCF-7 cells by immunocytochemistry.



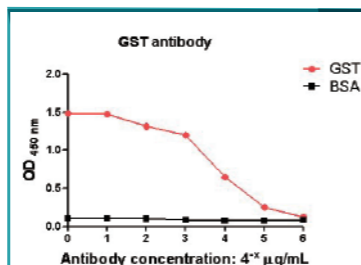
Anti-IL-8 Antibody [Clone 58-1] (LDG0030YA) was used to detect the IL-8 protein by ELISA.



Anti-MMP7 Antibody [Clone 1-4] (LDG0042YA) was used to detect MMP7 protein in 293T cells by Western blot. 293T cells were treated by LPS to increase the expression of MMP7.



Anti-mCherry Antibody [Clone 45-5] (LDG0007YB) was used to detect mCherry-expressing cells by flow cytometry analysis.



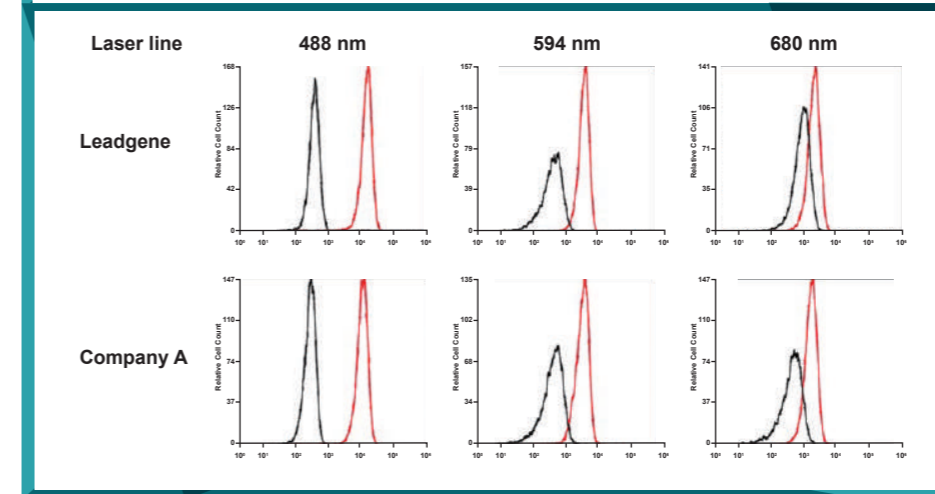
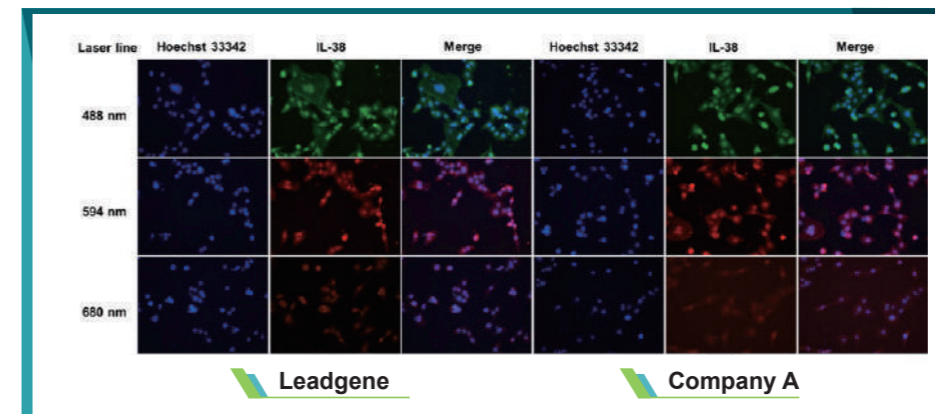
Anti-GST Tag Antibody [Clone 89-3] (LDG0005YB) was used to detect a GST-fused protein by ELISA.

Cat. No.	Product name	Conjugation	Applications
LDG0021YE	AccuBlot™ Anti-Mouse IgG Antibody (HRP)	HRP	ELISA, WB
LDG0075YA	Anti-M13 Antibody [Clone 8C1] (HRP)	HRP	ELISA, Phage display
LDG0006YE	Chicken Anti-Sheep IgG (H+L) Antibody	None	Immunoassay
LDG0044YE	Chicken Anti-Sheep IgG (H+L) Antibody (FAM)	5(6)-FAM	IFA, FACS
LDG0020YE	Chicken Anti-Sheep IgG (H+L) Antibody (HRP)	HRP	ELISA, IHC, WB
LDG0050YE	Chicken Anti-Sheep IgG (H+L) Antibody (TAMRA)	5(6)-TAMRA	IFA, FACS
LDG0004YE	Donkey Anti-Goat IgG (H+L) Antibody	None	Immunoassay
LDG0042YE	Donkey Anti-Goat IgG (H+L) Antibody (FAM)	5(6)-FAM	IFA, FACS
LDG0048YE	Donkey Anti-Goat IgG (H+L) Antibody (TAMRA)	5(6)-TAMRA	IFA, FACS
LDG0011YE	Goat Anti-Human IgG (Fc Fragment) Antibody	None	Immunoassay
LDG0017YE	Goat Anti-Human IgG (Fc Fragment) Antibody (HRP)	HRP	ELISA, IHC, WB
LDG0001YE	Goat Anti-Mouse IgG (H+L) Antibody	None	Immunoassay
LDG0040YE	Goat Anti-Mouse IgG (H+L) Antibody (FAM)	5(6)-FAM	IFA, FACS
LDG0012YE	Goat Anti-Mouse IgG (H+L) Antibody (HRP)	HRP	ELISA, IHC, WB
LDG0022YE	Goat Anti-Mouse IgG (H+L) Antibody (iFluor 405)	iFluor 405	IFA, FACS
LDG0028YE	Goat Anti-Mouse IgG (H+L) Antibody (iFluor 488)	iFluor 488	IFA, FACS
LDG0034YE	Goat Anti-Mouse IgG (H+L) Antibody (iFluor 594)	iFluor 594	IFA, FACS
LDG0038YE	Goat Anti-Mouse IgG (H+L) Antibody (iFluor 680)	iFluor 680	IFA, FACS
LDG0026YE	Goat Anti-Mouse IgG (H+L) Antibody (mFluor 450)	mFluor 450	IFA, FACS
LDG0046YE	Goat Anti-Mouse IgG (H+L) Antibody (TAMRA)	5(6)-TAMRA	IFA, FACS
LDG0003YE	Goat Anti-Rabbit IgG (H+L) Antibody	None	Immunoassay

# Secondary Antibodies

Cat. No.	Product name	Conjugation	Applications
LDG0041YE	Goat Anti-Rabbit IgG (H+L) Antibody (FAM)	5(6)-FAM	IFA, FACS
LDG0014YE	Goat Anti-Rabbit IgG (H+L) Antibody (HRP)	HRP	ELISA, IHC, WB
LDG0023YE	Goat Anti-Rabbit IgG (H+L) Antibody (iFluor 405)	iFluor 405	IFA, FACS
LDG0029YE	Goat Anti-Rabbit IgG (H+L) Antibody (iFluor 488)	iFluor 488	IFA, FACS
LDG0035YE	Goat Anti-Rabbit IgG (H+L) Antibody (iFluor 594)	iFluor 594	IFA, FACS
LDG0039YE	Goat Anti-Rabbit IgG (H+L) Antibody (iFluor 680)	iFluor 680	IFA, FACS
LDG0027YE	Goat Anti-Rabbit IgG (H+L) Antibody (mFluor 450)	mFluor 450	IFA, FACS
LDG0047YE	Goat Anti-Rabbit IgG (H+L) Antibody (TAMRA)	5(6)-TAMRA	IFA, FACS
LDG0007YE	Goat Anti-Rat IgG (H+L) Antibody	None	Immunoassay
LDG0045YE	Goat Anti-Rat IgG (H+L) Antibody (FAM)	5(6)-FAM	IFA, FACS
LDG0019YE	Goat Anti-Rat IgG (H+L) Antibody (HRP)	HRP	ELISA, IHC, WB
LDG0025YE	Goat Anti-Rat IgG (H+L) Antibody (iFluor 405)	iFluor 405	IFA, FACS
LDG0031YE	Goat Anti-Rat IgG (H+L) Antibody (iFluor 488)	iFluor 488	IFA, FACS
LDG0037YE	Goat Anti-Rat IgG (H+L) Antibody (iFluor 594)	iFluor 594	IFA, FACS
LDG0051YE	Goat Anti-Rat IgG (H+L) Antibody (TAMRA)	5(6)-TAMRA	IFA, FACS
LDG0008YE	Mouse Anti-Human IgG (H+L) Antibody [Clone hG15]	None	Immunoassay
LDG0010YE	Mouse Anti-Human IgM Antibody	None	Immunoassay
LDG0002YE	Rabbit Anti-Mouse IgG (H+L) Antibody	None	IFA, FACS
LDG0013YE	Rabbit Anti-Mouse IgG (H+L) Antibody (HRP)	HRP	ELISA, IHC, WB
LDG0024YE	Rabbit Anti-Mouse IgG (H+L) Antibody (iFluor 405)	iFluor 405	IFA, FACS
LDG0030YE	Rabbit Anti-Mouse IgG (H+L) Antibody (iFluor 488)	iFluor 488	IFA, FACS

Cat. No.	Product name	Conjugation	Applications
LDG0036YE	Rabbit Anti-Mouse IgG (H+L) Antibody (iFluor 594)	iFluor 594	IFA, FACS
LDG0005YE	Sheep Anti-Chicken IgY (H+L) Antibody	None	Immunoassay
LDG0043YE	Sheep Anti-Chicken IgY (H+L) Antibody (FAM)	5(6)-FAM	IFA, FACS
LDG0018YE	Sheep Anti-Chicken IgY (H+L) Antibody (HRP)	HRP	ELISA, IHC, WB
LDG0032YE	Sheep Anti-Chicken IgY (H+L) Antibody (iFluor 488)	iFluor 488	IFA, FACS
LDG0049YE	Sheep Anti-Chicken IgY (H+L) Antibody (TAMRA)	5(6)-TAMRA	IFA, FACS
LDG0015YE	AccuBlot™ Anti-Rabbit IgG (H+L) Antibody (HRP)	HRP	ELISA, WB



### Comparative data between Leadgene and a competitor's secondary antibodies.

Leadgene and a competitor's secondary antibodies were performed side-by-side by immunocytochemistry, revealing closely identical signal intensity.

## Amplification Technologies **Master Mix**

Cat. No.	Product name	Cat. No.	Product name
LDG0009RF	5X Taq PCR Master Mix	LDG0029RF	EffiStart™ 2X Probe qPCR Master Mix
DG0020RF	2X Colorimetric RT-LAMP Master Mix	LDG0031RF	EffiStart™ 2X Probe qPCR Master Mix (Glycerol-Free)
LDG0025RF	2X Fluorescent RT-LAMP Master Mix	LDG0032RF	EffiStart™ 5X Probe qPCR Master Mix (Glycerol-Free)
LDG0023RF	StablePlus™ 2X RT-LAMP Master Mix	LDG0033RF	EffiStart™ 2X One-Step Probe RT-qPCR Master Mix
LDG0024RF	StablePlus™ 2X Colorimetric RT-LAMP Master Mix	LDG0034RF	EffiStart™ 5X One-Step Probe RT-qPCR Master Mix
LDG0026RF	StablePlus™ 2X Fluorescent RT-LAMP Master Mix	LDG0035RF	EffiStart™ 2X One-Step Probe RT-qPCR Master Mix (Glycerol-Free)
LDG0027RF	LEADSPHERE® One-Step RT-PCR Master Mix	LDG0036RF	EffiStart™ 5X One-Step Probe RT-qPCR Master Mix (Glycerol-Free)

## Amplification Technologies **Polymerase**

Cat. No.	Product name	Cat. No.	Product name
LDG0006RF	M-MLV Reverse Transcriptase	LDG0012RF	Bst DNA Polymerase (Glycerol-Free)
LDG0011RF	M-MLV Reverse Transcriptase (Glycerol-Free)	LDG0021RF	Bst DNA Polymerase
LDG0010RF	Hot Start Taq DNA Polymerase (Glycerol-free)	LDG0022RF	HIV-1 Reverse Transcriptase

## Amplification Technologies **NTP & dNTP**

Cat. No.	Product name	Cat. No.	Product name
LDG0002RI	ATP Solution (100 mM)	LDG0006RI	NTP Set, 100 mM Solutions
LDG0003RI	UTP Solution (100 mM)	LDG0015RI	Pseudo UTP Sodium Solution (100 mM)
LDG0004RI	CTP Solution (100 mM)	LDG0016RI	N1-Me-pUTP Sodium Solution (100 mM)
LDG0005RI	GTP Solution (100 mM)		

## Molecular Biology **Buffer**

Cat. No.	Product name	Cat. No.	Product name
LDG0017RH	LG-1 2X Diluent Buffer	LDG0019RH	LG-3 2X Diluent Buffer
LDG0018RH	LG-2 2X Diluent Buffer	LDG0020RH	LG-4 2X Diluent Buffer

## Molecular Biology **In Vitro Transcription**

Cat. No.	Product name	Cat. No.	Product name
LDG0001RI	T7 RNA Polymerase	LDG0007RI	Inorganic Pyrophosphatase (Yeast)

## Cell Biology Reagents **Transfection reagent**

Cat. No.	Product name
LDG0001RA	HyFect® Transfection Reagent

## Cell Biology Reagents **Apoptosis reagent**

Cat. No.	Product name	Cat. No.	Product name
LDG0001RB	Annexin V-FAM Apoptosis Detection Reagent	LDG0009RB	Annexin V-iFluor 488 + PI Apoptosis Detection Reagent
LDG0002RB	Annexin V-FAM + PI Apoptosis Detection Reagent	LDG0011RB	Annexin V-FAM + 7-AAD Apoptosis Detection Reagent
LDG0003RB	Annexin V-TAMRA Apoptosis Detection Reagent		

## Cell Biology Reagents **Other**

Cat. No.	Product name	Cat. No.	Product name
LDG0005RO	Leadgene® ScaffoldForm 3D Culturing Gel	LDG0006RO	Leadgene® XenoForm Tumor Gel



# Protein Engineering

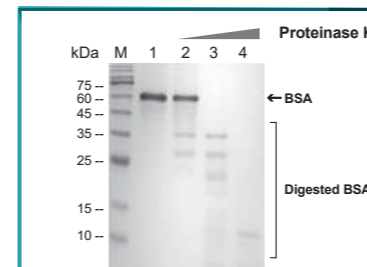
Cat. No.	Product name	Cat. No.	Product name
LDG0003RC	HyLink™ HRP Conjugation Kit, 1 mg*1	LDG0020RD	Anti-SUMO Tag Antibody Sepharose Purification Kit
LDG0006RC	HyLink™ Biotin Labeling Kit, 1 mg*1	LDG0009RD	Protein A Sepharose
LDG0009RG	HRV 3C Protease	LDG0010RD	Protein A Sepharose Purification Kit
LDG0010RG	UniHRV 3C Protease	LDG0011RD	Protein G Sepharose
LDG0014RG	SUMO Protease (ULP1) (Active)	LDG0012RD	Protein G Sepharose Purification Kit
LDG0006RG	Nuclease	LDG0013RD	Streptavidin Sepharose
LDG0001RD	Anti-cMyc Tag Antibody Sepharose	LDG0014RD	Streptavidin Sepharose Purification Kit
LDG0002RD	Anti-cMyc Tag Antibody Sepharose Purification Kit	LDG0015RD	Ni-NTA Sepharose
LDG0003RD	Anti-HA Tag Antibody Sepharose	LDG0016RD	Ni-NTA Sepharose Purification Kit
LDG0004RD	Mouse Anti-HA Tag mAb Sepharose Purification Kit	LDG0011RG	Colipase
LDG0005RD	Anti-V5 Tag Antibody Sepharose	LDG0013RG	Peroxidase
LDG0006RD	Anti-V5 Tag Antibody Sepharose Purification Kit	LDG0002RG	Endoglycosidase H (Endo H)
LDG0007RD	Anti-GST Tag Antibody Sepharose	LDG0006RI	NTP Set, 100 mM Solutions
LDG0008RD	Anti-GST Tag Antibody Sepharose Purification Kit	LDG0022RD	Anti-mCherry Antibody Sepharose Purification Kit
LDG0017RD	Anti-EGFP Antibody Sepharose	LDG0017RG	PNGase F
LDG0018RD	Anti-EGFP Antibody Sepharose Purification Kit	LDG0015RG	SUMO-Specific Protease 2 (SEN2)
LDG0019RD	Anti-SUMO Tag Antibody Sepharose		

# ELISA Kits

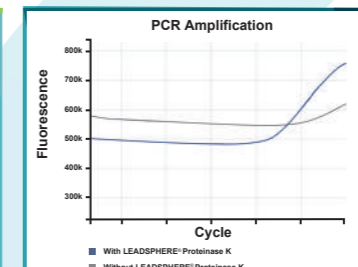
Cat. No.	Product name	Cat. No.	Product name
LDG00009E	IL-8 ELISA Kit	LDG00023E	Human IFN Gamma ELISA Kit
LDG00014E	Human IL-10 ELISA Kit	LDG00024E	T7 RNA Polymerase ELISA Kit
LDG00016E	SARS-CoV-2 Nucleocapsid Protein ELISA Kit	LDG00025E	Human IL-6 ELISA Kit
LDG00017E	HRV 3C Protease ELISA Kit	LDG00026E	Enterokinase ELISA Kit
LDG00019E	SUMO Protease (ULP1) ELISA Kit	LDG00027E	Human NF-L ELISA Kit
LDG00020E	TEV Protease ELISA Kit	LDG00028E	Human GM-CSF ELISA Kit
LDG00021E	Nuclease ELISA Kit	LDG00029E	Human FGF-1 ELISA Kit
LDG00022E	Monkeypox Virus (MPXV) M1R ELISA Kit		

# LEADSPHERE® Technology

Cat. No.	Product name	Format	Cat. No.	Product name	Format
LDG0001RG	LEADSPHERE® Proteinase K	<i>Lyophilized Sphere</i>	LDG0027RF	LEADSPHERE® One-Step RT-PCR Master Mix	<i>Lyophilized Sphere</i>



LEADSPHERE® Proteinase K (LDG0001RG) completely digested bovine serum albumin (BSA)



LEADSPHERE® Proteinase K (LDG0001RG) pretreatment produced sensitive detection in RT-qPCR assay.

